



**D I G I T A L**  
ULTRASOUND SYSTEM



**CHISON 8300VET**   
DIGITAL ULTRASOUND SYSTEM

**A Digital Compact, Just for VET!**

NOTE: Appearance subject to change without prior notice.

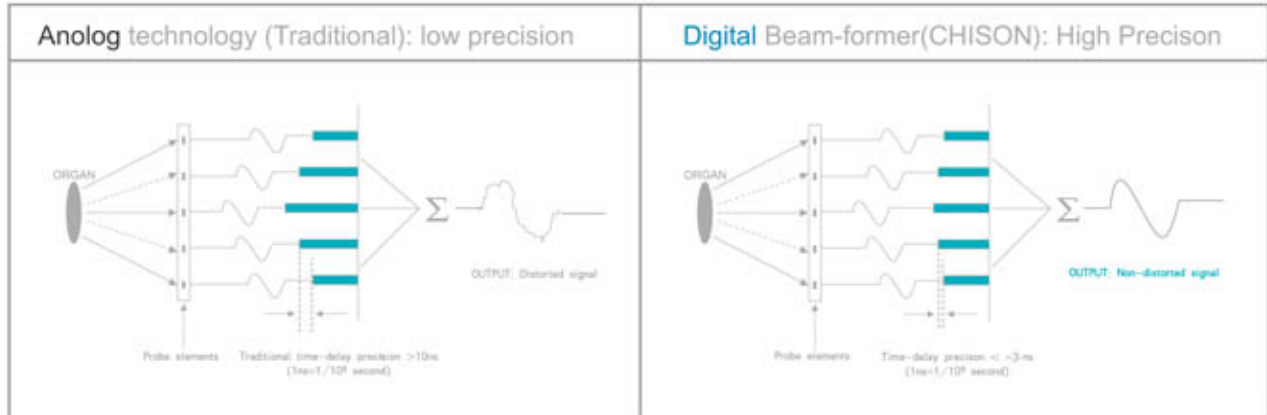
# CHISON 8300VET

DIGITAL ULTRASOUND SYSTEM



101010101001010101010010  
 101010101001010101010010  
 10101011011010110100101  
 1010101101001010101010  
 1010100101010010101010

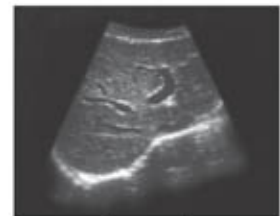
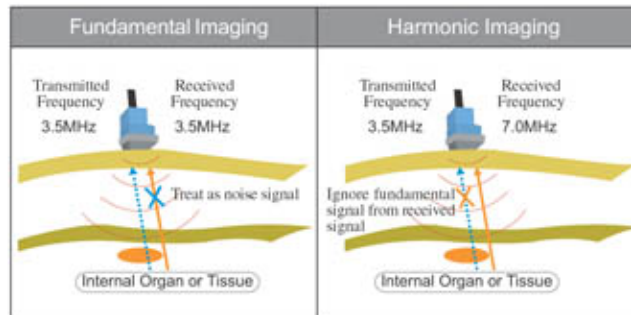
## Full digital beam-former



## Harmonic Imaging



No harmonic



harmonic

## Ergonomic Keyboard

- ◇ Back-lit keyboard for good visibility in dark room
- ◇ 6 STC slides for easy adjustment
- ◇ Multi-function knob and toggle for quick adjustment
- ◇ Setup key allows user-defined presettings
- ◇ Neat & Clear keyboard layout, doctor can remember easily
- ◇ Print directly from keyboard



101010010110101010101010  
 100101010101001010101010  
 1010101010101001010101010  
 101011010010110010101010  
 101011010010101010101010  
 101010010101001010101010  
 110100101001011010101010

## Multifunctional Ports

### ◇ 2 USB Ports



### ◇ VGA Port

- \* Can connect external computer monitor



## Special Design for VET

### ◇ Wide applications for VET

- \* Canine, Feline, Equine, Bovine, Ovine
- \* Pregnancy detection, abdomen, cardiology, small parts, tendon

### ◇ Special probes for VET

- \* Each probe has 4 step multi-frequency, allows different penetration

### ◇ Special software for VET (see page 4)



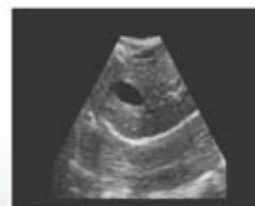
## Innovative Technology



Liver, Canine



Kidney, Canine



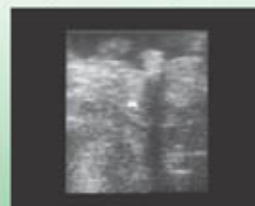
Hepatic Tissue, Canine



Prostate, Canine



Spleen, Canine



Ovary & Uterus, Bovine



# CHISON 8300VET

DIGITAL ULTRASOUND SYSTEM

## Specifications

Scanning Methods	Electronic Convex/Electronic Linear/Electronic micro-convex
Applications	Abdomen, OB&GYN, Small parts, Reproduction, Cardiology etc.
Display modes	B, B/B, 4B, M, B/M
Gray scale	256 levels
Scanning Techniques	Real-time dynamic imaging: RDF, RDA, DFS, DRA
	Harmonic imaging
Scanning Depth	240mm Max (depend on the probe types)
Probe Frequency	2.5Mhz -10.0Mhz (Depend on the probe types)
No. of Probe Connectors	1 (Standard), 2 (Optional)
Monitor	10-inch SVGA high resolution monitor
CINE loop	128 frames
Image storage	Permanent storage on Built-in memory, and USB disk
Zoom	4 step
Image Processing	Pre-processing: IP selection, dynamic range, edge enhancement, smooth, frame averaging, scanning angle selection, line density selection
	Post-processing: $\gamma$ correction, gray transformation, gray rejection
	STC: 6 slides for Near, Far and Overall gain control.
Image Reversing	Left/right, Up/Down
Software Packages	Canine: GS, CRL, HD, BD
	Feline: HD, BD
	Equine: GS
	Bovine: BPD, CRL, Trunk Diameter
	Ovine: BPD, CRL, Trunk Diameter
General Measurements	B mode: distance, circumference, area, volume, ratio, angle, % stenosis, histogram, profile
	M mode: distance, time, velocity, heart rate
Archives Management	patient information management
Documentation	Full screen documentation, hospital name, patient name, date/time
	Annotation database available, pre-saved phrases can be recalled
Power Supply	AC 230V $\pm$ 10%, 50Hz(standard)/AC110V $\pm$ 10%, 60Hz (Upon customer request)
Standard System	main unit + 5.0Mhz micro convex probe + 1 probe connector + 2 USB ports +VGA port
Options	7.5Mhz linear probe, 3.5Mhz convex probe, 5.0MHz Linear rectal probe, 2nd probe connector, USB flash disk, Trolley (TR-8000), Video printer

### CHISON MEDICAL IMAGING CO.,LTD.

Address: NO.8, XIANG NAN ROAD, SHUO FANG,  
NEW DISTRICT, WUXI, CHINA 214142

Tel: 0086-510-85310197, 85310593, 85310937, 85311707

Fax: 0086-510-85310726

Http://www.chison.com.cn

E-mail: export@chison.com.cn