

# CHISON

Value Beyond Imaging



Full Screen Display Mode

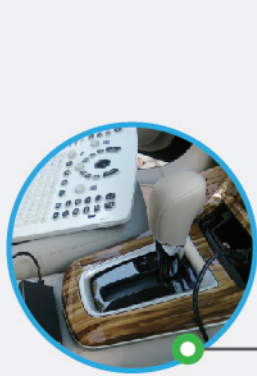
# ECO1

Premium Design, Surprising Price

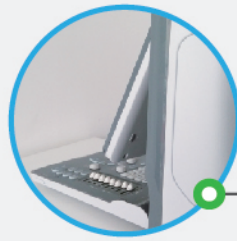


WWW.CHISON.COM

# Userfriendly and Modern Design



Vehicle Power Charger



12 inch rotatable LED monitor (0~30°)  
adapt to different viewing angles



One key to quickly save



Anti-water keyboard Cover



DICOM 3.0 (option), USB

# ECO1

Premium Design, Surprising Price



Ultra-compact

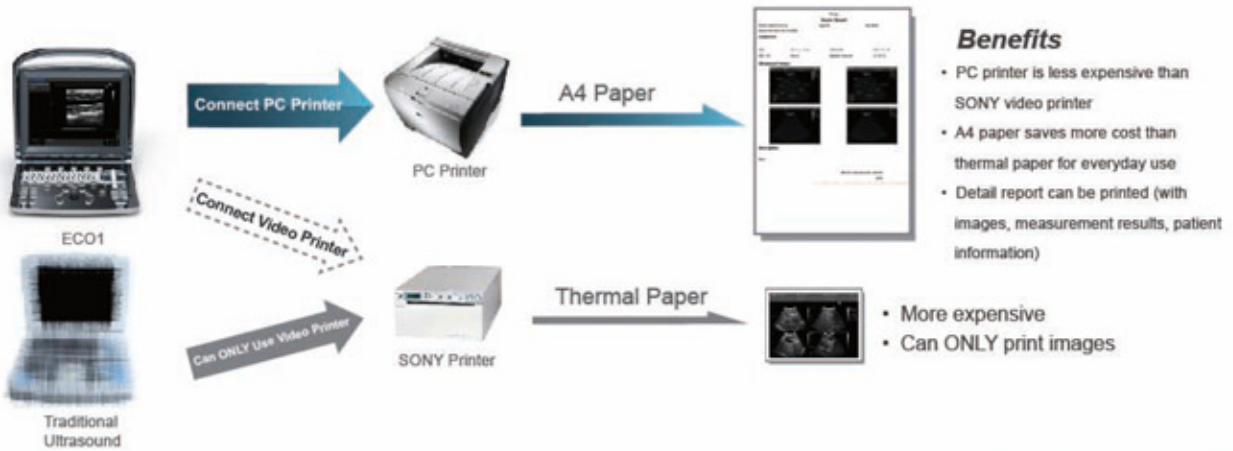


Clips for quick recall  
(CINE, Still images)



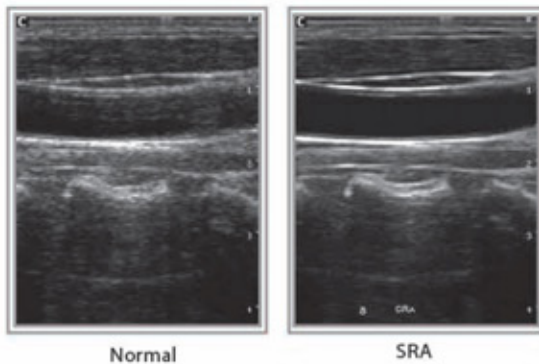
Carry case (BG-100):  
go anywhere you want

## Support PC Printer



## Advanced Technologies

### Speckle Reduction Algorithm(SRA)



SRA is the technique that uses a variety of denoising algorithm to suppress speckle, smooth the tissue images, and make the faint edge more appearing.

## Great image quality



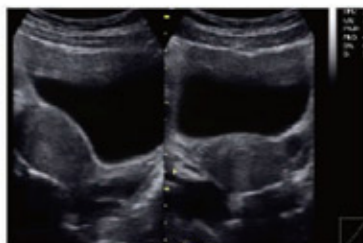
Elbow Joint



Fetal Hand



BPD



Uterus, 2B Mode



Follicle, B Mode



Kidney, B Mode

# Specifications

Applications	Fetal/OB; Abdominal (GYN & Urology); Pediatric; Small Organ (breast, testes, thyroid); Cardiac (adult & pediatric); Peripheral Vascular, Musculo-skeletal Conventional & Superficial, Transvaginal
Display Modes	B, B/B, 4B, M, B/M
Gray Scale	256 Levels
Scanning Depth	240mm Max (depend on the probe types)
Probe Frequency	2.5MHz - 11MHz (Depend on the probe types)
Cine Loop	256 frames
Zoom	4 steps
Software Packages	general measurement package, OB measurement package, GYN measurement package, URO measurement package, cardiac measurement package, vascular measurement package, small parts measurement package
Archives Management	Patient information management, Patient images record, Patient exam report.
Documentation	Full screen documentation, Hospital name, Patient name, Date/time Annotation database available, Pre-saved phrases can be recalled
Power Supply	AC 100V-240V, 50Hz- 60Hz
Standard Configuration	Main unit + 2.5MHz - 5.0MHz Convex probe C3-A + 1probe connector+ 3 USB ports + VGA port + Video port + LAN port, Full Screen Display Mode, i-Image, Chroma SRA, THI
Option	Probe connector, DICOM 3.0, Water-proof keyboard cover, Carry Case (BG-100), Support PC Printer* (HP P2055D, HP 1102, HP M251n), TR-9000, 4G memory card



2.5MHz - 5.0MHz Convex  
C3-A



5.3-10.0MHz Linear  
L7M-A



5.3-11.0MHz Linear  
L7S-A



2.5 MHz-5.0MHz Micro-Convex  
MC3-A



4.0 MHz - 8.0MHz Transvaginal  
V6-A



4.5MHz - 8.0MHz Micro-Convex  
MC6-A

## CHISON MEDICAL IMAGING CO., LTD.

### Sales & Service Contact Address:

No. 9 Xin Hui Huan Road, New District, Wuxi, Jiang Su Province, China 214028

TEL: 0086-510-85310593 / 85310937 FAX: 0086-510-85310726 EMAIL: export@chison.com.cn



We reserve the right to make changes to this catalogue without prior notice.  
Please contact us or your local dealer for the latest information.  
\*Please refer to the user manual for details.

E-ECO1-141028